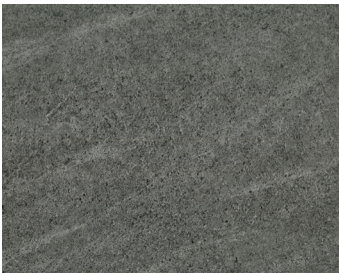




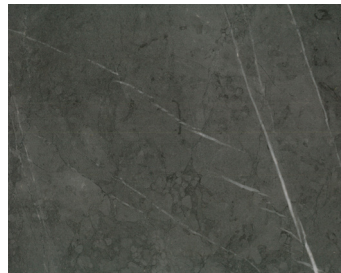
SmartDrop Elite Tile

Looselay Luxury Vinyl

The “need for speed” meets design in this ultimate loose lay Luxury Vinyl Tile flooring. Installs quickly over most subfloors, with no special tools, for an instant ready-to-live-on floor. Available in 18" x 36" and 20" x 20" tile.



Constellation



Patagonia



Chalk



Quarry



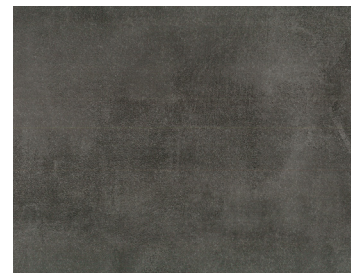
Opal



Brimstone



Satinwash



Azure Sky

Product Specifications

- Structure: Engineered luxury vinyl tile - 3/16" (5mm) overall thickness
- Wear Layer: 0.5mm/ 20mil wear layer
- Dimensions: **Constellation, Patagonia, Chalk, Quarry, Opal, Brimstone**
18" width x 36" length (457mm width x 914mm length)
Satinwash, Azure Sky 20" width x 20" length (508mm width x 508mm length)
- Gloss Level: Matte finish
- Finish: Embossed
- Additional Features: Solid fiberglass core delivers premium stability
- Installation: Loose lay, glued down, perimeter glue or tape
- Suitable Location: On, above or below grade
- Certification: Floorscore
- Radiant Heat: Suitable for use with hydronic systems
- Warranty: Lifetime limited residential wear
15-year limited heavy commercial wear